



**Head Office**

WOORI M-Tech Co., Ltd. (Head Office)  
21-5, Duckwoogongdan2-gil, Bongdam-eup,  
Hwaseong-si, Gyeonggi-do, KOREA (445-901)  
TEL. 82-31-278-2084 / FAX. 82-31-278-2085

**Branch (Hwaseong Plant)**

WOORI M-Tech Co., Ltd. (Hwaseong Plant)  
1379-19, Seohae-ro, Paltan-myeon, Hwaseong-si,  
Gyeonggi-do, KOREA (445-958)  
TEL. 82-31-8047-5263~4 / FAX. 82-31-8047-5265

**Branch (Gwangju Plant)**

WOORI M-Tech Co., Ltd. (Gwangju Plant)  
75, Hanamsandan 8beon-ro, Gwangsan-gu, Gwangju,  
KOREA (506-258)  
TEL. 82-62-955-3088 / FAX. 82-62-955-3089

**Branch (Overseas Company Thailand)**

WOORI Mold (THAILAND) Co., Ltd.  
972 Moo 5 Preaksa Rd. Preaksa Mai, Muang  
Samuthprakarn Samuthprakarn 10280, THAILAND  
TEL. +66-02-324-3373 / FAX. +66-02-324-3374



High Quality! High Technology! Best Company of Mold!



# It creates the value of top WOORI M-Tech Co., Ltd.





[www.woorimold.co.kr](http://www.woorimold.co.kr)



# It creates the value of top WOORI M-Tech Co., Ltd.



#### Head Office

WOORI M-Tech Co., Ltd. (Head Office)  
21-5, Duckwoogongdan2-gil, Bongdam-eup,  
Hwaseong-si, Gyeonggi-do, KOREA (445-901)  
TEL. 82-31-278-2084 / FAX. 82-31-278-2085

#### Branch (Hwaseong Plant)

WOORI M-Tech Co., Ltd. (Hwaseong Plant)  
1379-19, Seohae-ro, Paltan-myeon, Hwaseong-si,  
Gyeonggi-do, KOREA (445-958)  
TEL. 82-31-8047-5263~4 / FAX. 82-31-8047-5265

#### Branch (Gwangju Plant)

WOORI M-Tech Co., Ltd. (Gwangju Plant)  
75, Hanamsandan 8beon-ro, Gwangsan-gu, Gwangju,  
KOREA (506-258)  
TEL. 82-62-955-3088 / FAX. 82-62-955-3089

#### Branch (Overseas Company Thailand)

WOORI Mold (THAILAND) Co., Ltd.  
972 Moo 5 Preaksa Rd. Preaksa Mai, Muang  
Samuthprakarn Samuthprakarn 10280, THAILAND  
TEL. +66-02-324-3373 / FAX. +66-02-324-3374



## CORPORATE OVERVIEW

### COMPANY INTRODUCTION

WOORI M-Tech in 1990, we specialized in mold manufacturing companies in the last 20 years starting with the spirit of challenge and ambition "Honest Enterprise" and its management vision "Technology Development, and Responsible Spirit, the Pioneering Spirit", Under the business philosophy of innovation and in research and development with an attitude of constantly challenging efforts to secure future growth engines are doing.

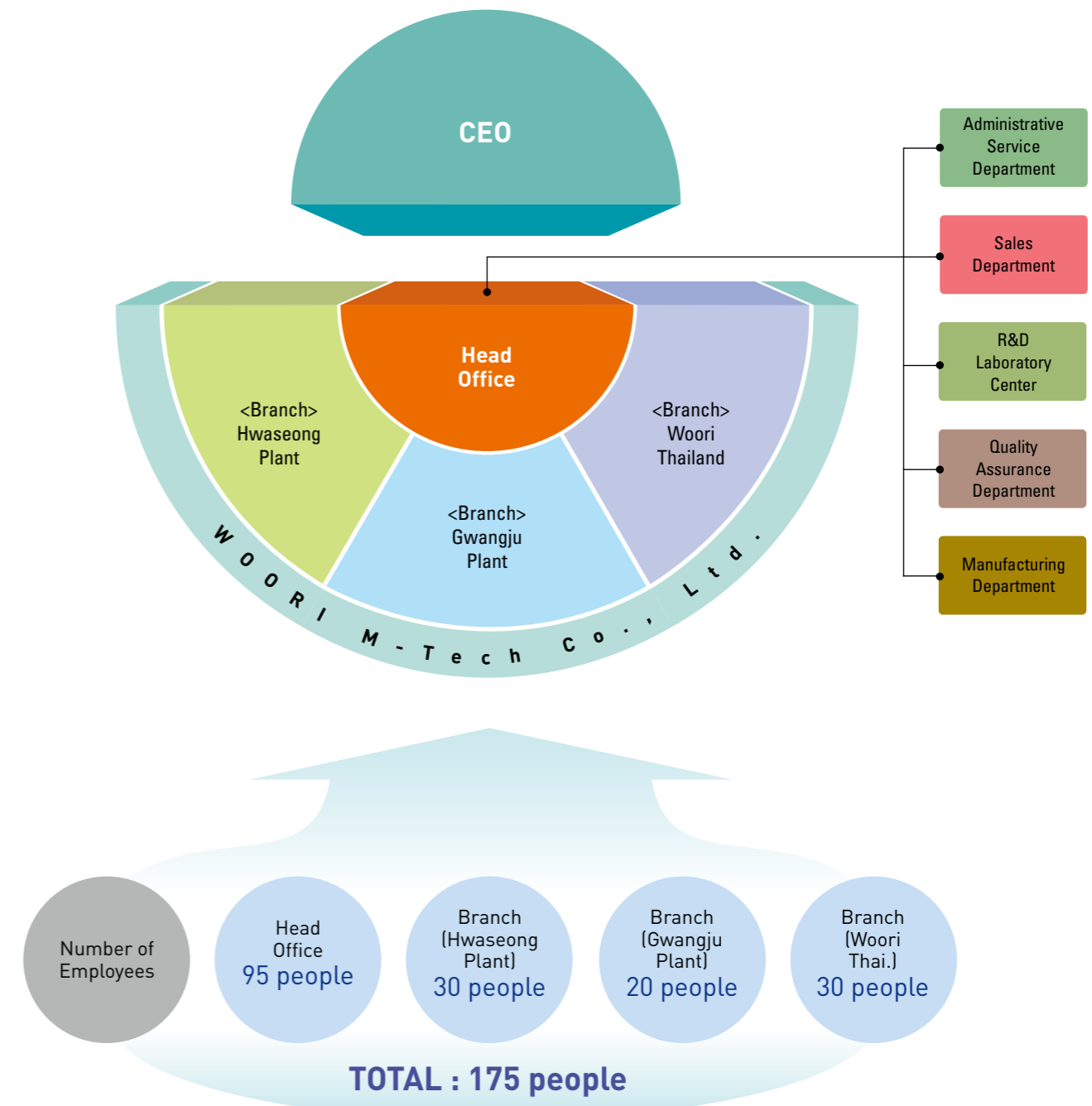
We scaled the best technologies and highest quality based on the database will a company leader for the manufacture of molds.

### COMPANY HISTORY

- 1990 Jul. Established WOORI Precision co.
- 2000 Nov. "SAMSUNG" Partnership
- 2001 Aug. Achieved "ISO 9001" Certificate
- 2002 Apr. Moved for territorial expansion to Uiwang
- 2005 Feb. R&D Lab. Established  
Jul. Achieved "ISO 14001" Certificate  
Aug. "WOORI Precision Co., Ltd.." (Incorporated)  
Oct. Thailand foreign corporation establishment
- 2006 Mar. Moved for territorial expansion to Ansan  
Jun. Achieved "ISO/TS 16949" Certificate
- 2007 Sep. Appointed as a "INNO-BIZ ENTERPRISE"
- 2008 Oct. "WOORI M-Tech Co., Ltd.." (Incorporated)  
Oct. Moved for territorial expansion to Hwaseong
- 2009 Sep. Selected as a Promising small and medium enterprise  
Nov. Awarded in "500 million expert tower"  
Dec. Appointed as a "VENTURE ENTERPRISE"
- 2010 Oct. Established GWANGJU Plant
- 2011 Nov. Awarded in "1,000 million expert tower"  
Dec. Achieved "SQ-Mark" Certificate
- 2013 Mar. Established HWASEONG Plant
- 2014 Jan. Selected as member of "Global Small but Strong"
- 2015 Jun. Achieved OHSAS 18001 Certificate
- 2016 Feb. Roots technology expert designated



### ORGANIZATIONAL



# MAIN PRODUCT & Partners

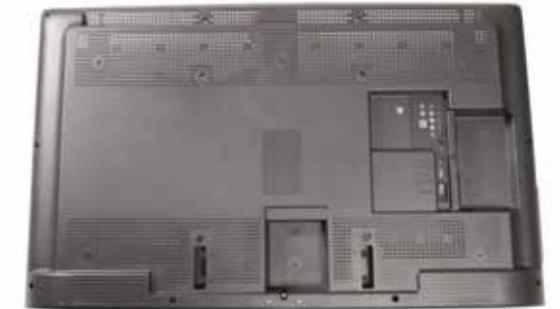


## TV, Computer LED Monitor Parts

(Front-Cover Parts, Back-Cover Parts, Stand Parts, The Other Parts)



Home-Theater



Rear-Cover



Front-Cover



Mold-Frame



Evolution-Kit



Remote-control



Front-Cover



Front-Cover



Speaker



Remote-control



**MAIN PRODUCT & Partners**



**Automobile Parts**

(H/Lamp Housing, Instrument, Console-Box, The Others Parts)



BEZEL



BEZEL



BEZEL



BEZEL



BEZEL



BEZEL



BEZEL



OUTER LENS



OUTER LENS



BEZEL



BEZEL



BEZEL



H/Lamp-Housing



TERMINAL PANEL



Air Conditioners)



Air Conditioners)



Air Conditioners)



Air Conditioners)



H/Lamp-Housing



H/Lamp-Housing



Air Conditioners)



Air Conditioners)



INNER LENS



CENTER FASCIA



CENTER FASCIA



CENTER FASCIA



BEZEL



GARNISH



GARNISH



BUMPER

### MAIN PRODUCT & Partners



### Home Appliances & OA Parts

(Remote control, Speaker, Washing Machine, Refrigerator, Facsimile, Walkie Talkie, The Other Parts)



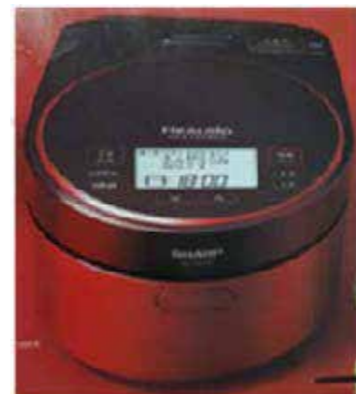
Refrigerator



Cooker



Micro-Wave



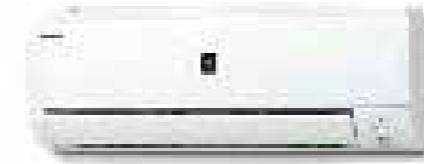
Cooker



Facsimile



CAM-Corder



Air-Conditioner



Wall-Conditioner



Wall-Conditioner



Washing-Machine



Washing-Machine



Ion-Generator



Ion-Generator



Projector



Micro-Wave



3D-Glasses



# CERTIFICATION

## R&D CENTER INTRODUCTION

WOORI M-Tech Research Institute in 2005. GLOBAL competitiveness established to technical innovation and research and development mold shorten the duration for the mold design, databases, shop floor ballroom of cotton, On-Line System, the surface quality System, etc. Customer satisfaction and customer needs by developing a response to the better quality and price and delivery and will provide the best service.

## CERTIFICATION & INTERLECTUAL PROPERTIES

Carried out by our customers in the community loved, contributing to national economic development will become an honest company.



ISO 9001	ISO 14001	TS 16949	OHSAS 18001	SQ-Mark	INNO-BIZ	Venture
2001.08.16	2005.07.28	2006.07.13	2015.06.19	2011.12.28	2007.11.15	2009.12.14
JK-11314	JEK-2258	0134199	OA150031	PLM254	R7061-3980	20110108747
IIC	IIC	NQA (IATF)	CREBIZ	Hyundai-KIA	SMBA	KIBO

## EQUIPMENTS (Manufacturing )

Class	EQUIPMENTS	Q'ty
CNC	CNC Machine Center	14
	5-AXIS Machine	1
	SMART Machine(Graphite)	1
	CNC Machine Center(Graphite)	3
	CNC E.D.M (Makino)	5
GER	Wire Cutting Machine	6
	General Milling Machine	5
	Electric Discharge Machine	2
	Grinding Machine	5
	General Engine LATHE	1
	Drilling Machine (Radial)	1
	Band SAW	1
INJ	Mold Reversing Machine	1
	Die-Sporting Machine	2
CMM	Injection Mold Machine	5
	CMM (Coordinate Measuring Machine)	3
	OMM (On Machine Measurement)	3



## EQUIPMENTS (R&D)



Class	EQUIPMENTS	Q'ty
CAM	UG-NX (CAM)	7
	MS (Machings Strategist)	7
	NC-Brain	7
	Power-Mill	7
CAD	UG-NX (3D-Design)	42
	Auto-CAD(2007,2002,LT)	21
	CAD-MAX	12
	CATIA V5	2
	Tc Visualization Standard	10
	Express Foundation	20
	3D Reviewer PREMIUM	15
CAE	Mold-flow Insight (AMIP)	2
ETC	Team-Center	1
	My-Mold ERP (MES/POP)	1